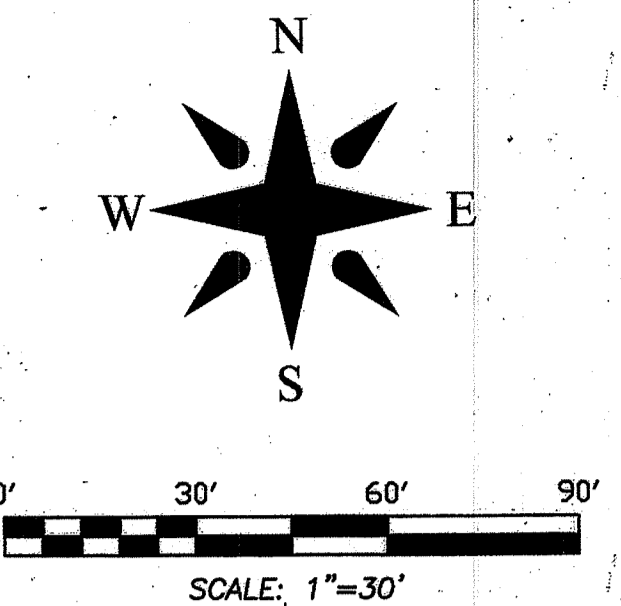


Palm Beach Day Academy

BEING A PORTION OF LOT 15, ACCORDING TO THE PLAT OF ADDITION No. 1 TO CARLBERG COURT AS RECORDED IN PLAT BOOK 5, PAGE 45; LOTS 19, 21, 23, 25, 27, 29, 31, 32, 33, 34, THE 5 FOOT WALK AREA BETWEEN LOTS 32 & 33, AND A PORTION OF COCOANUT LANE AND TUXEDO LANE ACCORDING TO THE PLAT OF MATTHAM'S PARK AS RECORDED IN PLAT BOOK 10, PAGE 31; A PORTION OF THE "NOT INCLUDED" PARCEL ACCORDING TO THE PLAT OF EL CID NORTH AS RECORDED IN PLAT BOOK 16, PAGE 84; AND A PORTION OF THE DISCLAIMED AREA OF FLAGLER DRIVE AS RECORDED IN OFFICIAL RECORDS BOOK 23718, PAGE 1822; ALL OF THE PUBLIC RECORDS OF PALM BEACH COUNTY, FLORIDA, LYING IN SECTION 27, TOWNSHIP 43 SOUTH, RANGE 43 EAST, CITY OF WEST PALM BEACH, PALM BEACH COUNTY, FLORIDA.

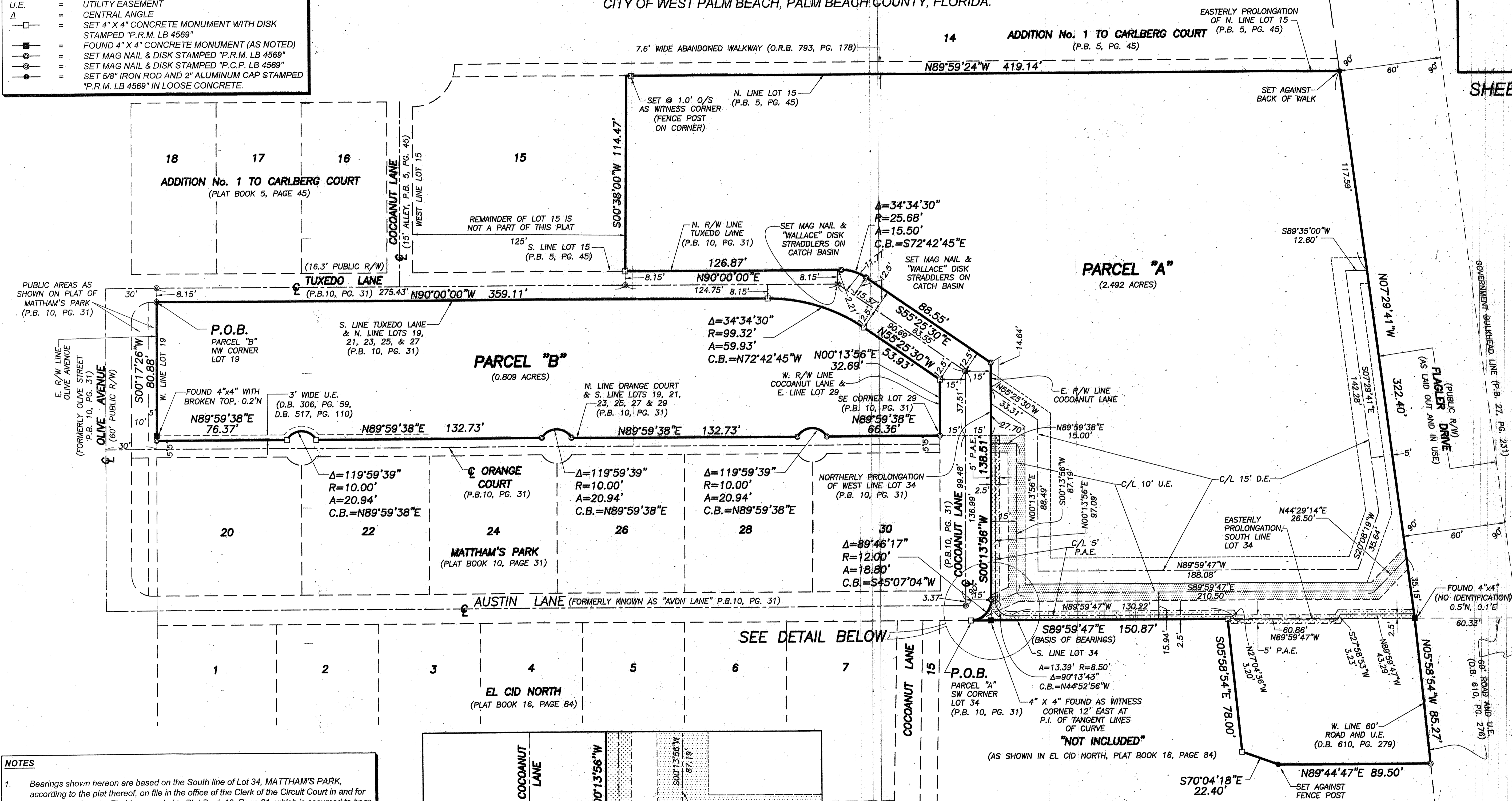


14

SHEET 3 OF 3

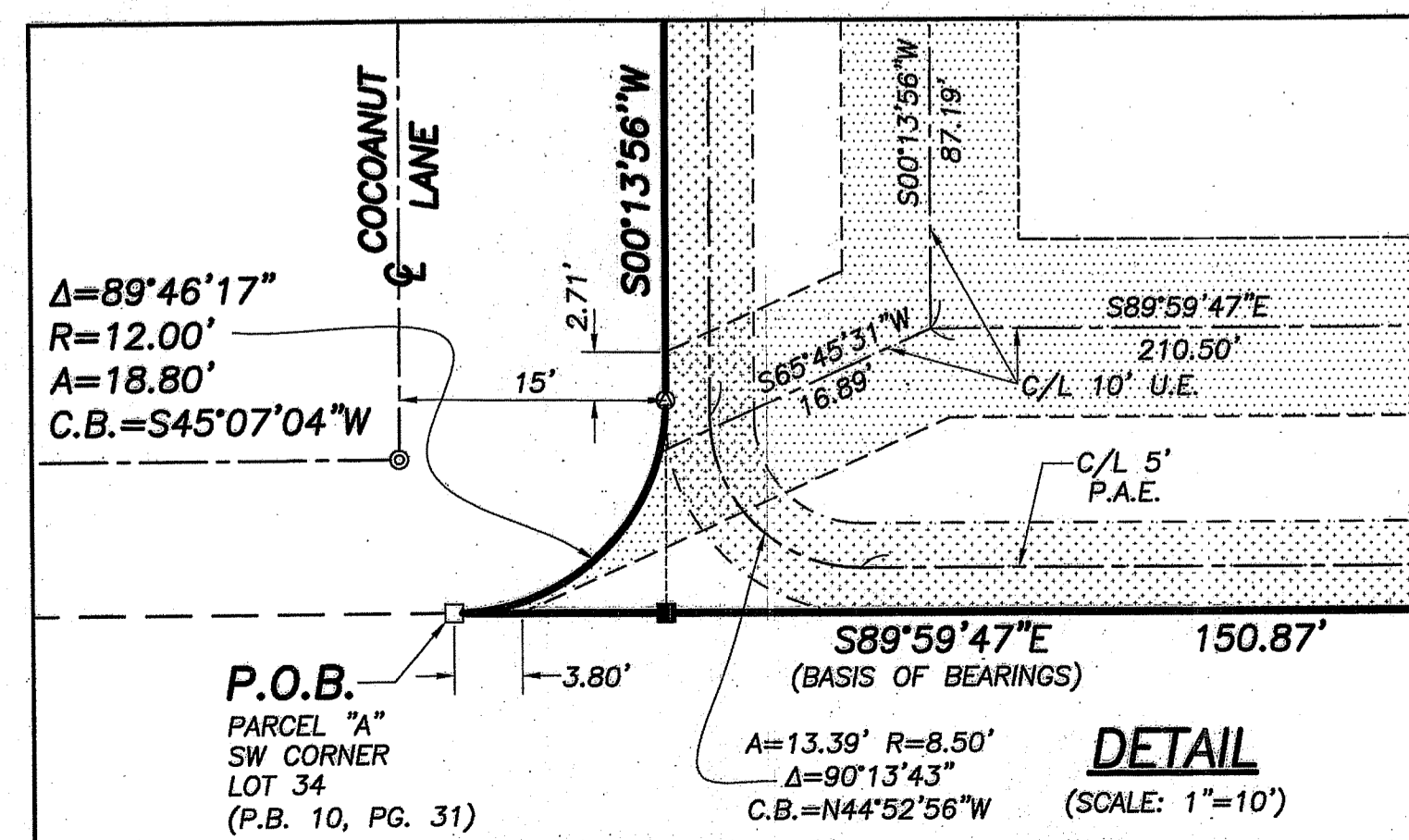
ABBREVIATIONS AND SYMBOLS

A	=	ARC LENGTH
C.B.	=	CHORD BEARING
C/L	=	CENTERLINE
D.B.	=	DEED BOOK
D.E.	=	DRAINAGE EASEMENT
N.T.S.	=	NOT TO SCALE
O.R.B.	=	OFFICIAL RECORDS BOOK
O/S	=	OFFSET
P.A.E.	=	PEDESTRIAN ACCESS EASEMENT
P.B.	=	PLAT BOOK
PG.	=	PAGE
P.O.B.	=	POINT OF BEGINNING
R	=	RADIUS
RAW	=	RIGHT OF WAY
U.E.	=	UTILITY EASEMENT
Δ	=	CENTRAL ANGLE
□	=	SET 4" X 4" CONCRETE MONUMENT WITH DISK STAMPED "P.R.M. LB 4569"
■	=	FOUND 4" X 4" CONCRETE MONUMENT (AS NOTED)
○	=	SET MAG NAIL & DISK STAMPED "P.R.M. LB 4569"
●	=	SET MAG NAIL & DISK STAMPED "P.C.P. LB 4569"
●	=	SET 5/8" IRON ROD AND 2" ALUMINUM CAP STAMPED "P.R.M. LB 4569" IN LOOSE CONCRETE.



NOTES

- Bearings shown hereon are based on the South line of Lot 34, MATTHAM'S PARK, according to the plat thereof, on file in the office of the Clerk of the Circuit Court in and for Palm Beach County, Florida, recorded in Plat Book 10, Page 31, which is assumed to bear South 89°59'47" East and all other bearings are relative thereto.
- No building or any kind of construction, trees or shrubs shall be placed on any easement without prior written consent of all easement beneficiaries and all applicable city approvals or permits as required for such encroachments.
- Existing recorded easements shown hereon are shown for informational purposes only and are not part of this plat.
- In those cases where easements of different types cross or otherwise coincide, drainage easements shall have first priority, utility easements shall have second priority, access easements shall have third priority, and all other easement shall be subordinate to these with their priorities being determined by use rights granted.
- This instrument prepared by: Robert J. Cajal in the office of Wallace Surveying Corporation, 5553 Village Boulevard, West Palm Beach, Florida 33407



PLAT OF:
Palm Beach Day Academy

WALLACE SURVEYING
CORP. LICENSE # 18888 & 4591
5553 VILLAGE BOULEVARD, WEST PALM BEACH, FLORIDA 33407 (561) 640-4551

FIELD:	JOB No.: 09-1277.20	F.B.	PG.
OFFICE: R.C.	DATE: JULY, 2015	DWG. No.:	09-1277-12
C/K'D:	REF.: 09-1277-12 PLAT	SHEET 3 OF 3	